



For professions involving a risk of contact with hazardous biological and chemical substances, and in cases when touched surfaces should be protected against contamination, appropriate protection is of great significance.

Master Glove are gloves ensuring comfortable and safe performance of tasks.

They are of universal shape matching both hands, and their rolled up cuff pulling the glove on easier.

- ✂ Latex examination gloves
- ✂ Nitrile examination gloves
- ✂ Vinyl examination gloves
- ✂ Surgery gloves

To meet different needs of customers and various uses of diagnostic gloves, Master Glove gloves are available in an extensive range of colours and sizes.



To ensure the highest quality guaranteeing safety and satisfaction of their users, SORIMEX gloves meet the requirements of the Medical Devices Directive, **MDD, 93/42/EEC**, updated by the Directive 2007/47/EC, the Medical Devices Act of 20 May 2010 adapted in Poland, and the Personal Protection Equipment Directive, **PPE, 89/686/EEC**.

The gloves meet the requirements of harmonised standards: EN 455, EN 374, EN 420, and EN 388.

Each ordered batch of gloves undergoes strict quality inspection, and the test results are confirmed with relevant documents.



Examination gloves



Latex examination gloves

- ✘ for outpatient procedures, care and therapeutic activities
- ✘ protective equipment in cosmetology and for household activities
- ✘ excellent operational parameters, including stretching and flexibility



Nitrile examination gloves

- ✘ for works at medical sites and at research institutes
- ✘ protective equipment in automotive mechanics
- ✘ do not interact with petroleum oils, grease, solvents
- ✘ do not contain latex



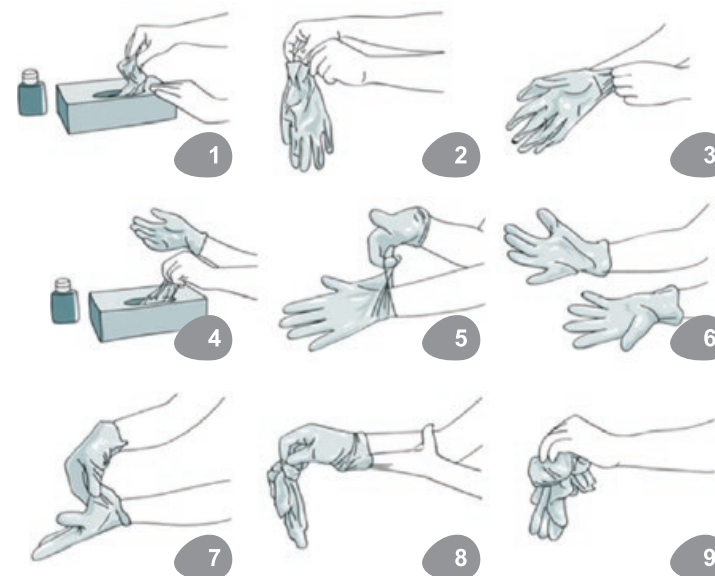
Vinyl examination gloves

- ✘ for care and cleaning activities
- ✘ for food processing industry and catering services
- ✘ resistant to plant and animal fats
- ✘ for people allergic to latex

Instructions for use

Clean hands by disinfecting them with an alcohol-based formulation or washing them with soap and water.

1. Remove a glove from its original packaging.
2. Touch only a limited area of the glove in the wrist area (at the very top of the cuff).
3. Pull the first glove on.
4. Remove the second glove with your naked hand, touching only a limited area of the glove in the wrist area.
5. Fold back the external part of the glove being pulled on with bent fingers of the gloved hand, to pull the glove on the second hand.
6. After pulling the gloves on, do not touch anything that was not specified in indications or conditions of use for the gloves.
7. To peel the glove off, grab it with your fingers at the wrist height without touching the skin of your forearm and peel it off turning it inside out.
8. Hold the removed glove in the hand that is still gloved, and slip the fingers of your other, naked hand between the glove and the wrist.
9. Peel the second glove off rolling it down along your hand, and then pull it over the other glove held in your fingers.





latex classic   x100 AQL 1,5 kl. I kat. I 

latex classic blue   x100 AQL 1,5 kl. I kat. I 

latex simple   x100 AQL 1,5 kl. I kat. I 

latex PF chlori   x100 AQL 1,5 kl. I kat. I 

latex PF poly   x100 AQL 1,5 kl. I kat. I 



nitrile PF   x100 AQL 1,5 kl. I kat. III   x200

nitrile PF pink   x100 AQL 1,5 kl. I kat. III  

nitrile PF black   x100 AQL 1,5 kl. I kat. III  

nitrile PF simple   x100 AQL 1,5 kl. I kat. I  



vinyl simple   x100 AQL 1,5 kl. I kat. I 

vinyl PF simple   x100 AQL 1,5 kl. I kat. I 

vinyl PF simple blue   x100 AQL 1,5 kl. I kat. I 

				x100	kl. I	kat. III
powdered	powder free	smooth	textured	quantity per packaging	MDD device class	PPE category

Manufactured in accordance with the Medical Devices Directive, 93/42/EEC, and Personal Protection Equipment Directive, 89/686/EEC.



MEDICAL GLOVES





Latex surgery gloves

- ☒ radiation-sterilised
- ☒ fully anatomical shape, differentiated into left and right hand
- ☒ micro-textured surface guaranteeing a secure grip in a surgical environment
- ☒ elongated cuff with a reinforced rolled edge



latex PF aseptic



x50

AQL
1,0

kl. IIa
kat. III



CE 0120
CE 0321

latex aseptic



x50

AQL
1,0

kl. IIa
kat. III

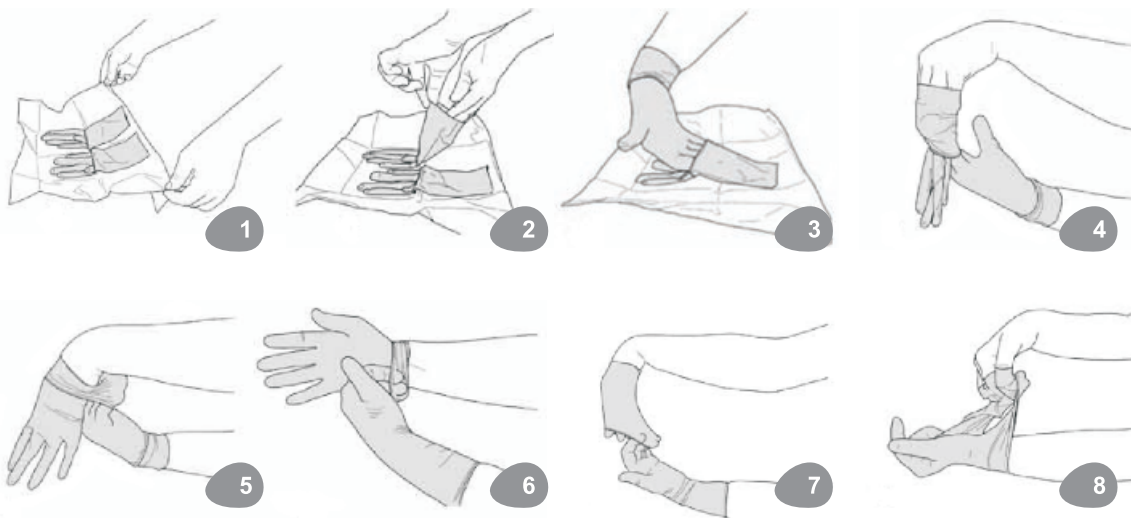


CE 0120
CE 0321

The gloves should be pulled onto thoroughly disinfected and dried hands.

1. Open the external envelope and remove gloves packed into the internal envelope - preferably, this task should be performed by another person. Holding the envelope flaps, open the packaging.
2. With your left hand, hold the unfolded cuff of the right glove. Put your right hand into the right glove.
3. Put your right hand into the folded cuff of the left glove. At the same time, lift the glove up.
4. With your right hand held in the folded cuff of the left glove, put your left hand into the left glove.
5. Unfold your right hand until it is fully extended and pull the cuff of the left glove over the apron cuff.
6. Put your gloved left hand into the folded cuff of the right glove. Unfold until it is fully extended and pull the cuff of the right glove over the apron cuff.
7. The gloves are peeled off by grabbing the external part of the worn glove with fingers of your other hand, stretching it slightly. Then peel the glove off, rolling it inside out. Never remove the glove off completely.
8. Grab the other glove with the partly rolled and peeled off glove, and repeat the procedure used for the first hand.

Pull the rolled and partly peeled glove over the other.



the heart of experience